

Visit www.ncl.com/shore-excursions to see available shore excursions. Pre-book by logging in or creating an online account or by calling the Norwegian Excursion line at 866-625-1167.

STAR
DESTINATIONS

Celebrating
40
forty years!

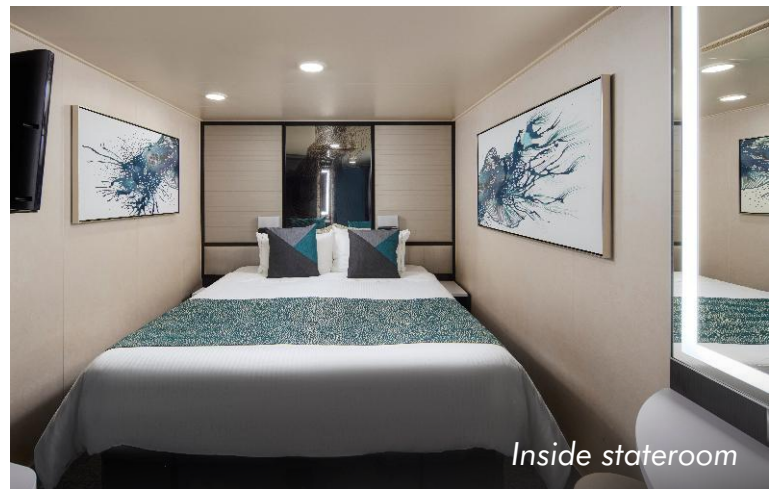
ALASKA LAND & CRUISE

August 8-19, 2024

Venture to Alaska to be immersed in Native traditions, ride the rails, and step into the world of dog sledding with the Iditarod's preeminent mushing family. From the top of Mt. Alyeska to the calm waters of the Kenai River and Kenai Fjords National Park, we'll encounter magnificent scenery and amazing wildlife at every turn. Combined with a seven-night cruise from Seward to Vancouver on board the beautiful *Norwegian Jewel*, it is an experience few will ever have!

Space is limited.
**Register
today!**





DAY 1 THURSDAY, AUGUST 8

ANCHORAGE

Today we will board our flight to **Anchorage**, the largest city in Alaska. The city combines wild Alaska beauty, convenient urban comforts, mesmerizing outdoor spaces, and captivating arts and culture. Upon our arrival, we will make our way to the beautiful **Anchorage Hilton Hotel** (or similar). With the remainder of the day at your leisure, enjoy the beautiful views from your room of the neighboring Cook Inlet, the Chugach Mountains, or the Anchorage cityscape.

Note: The airport location and airline will be confirmed nine months before departure.

DAY 2 FRIDAY, AUGUST 9

TALKEETNA

(Breakfast, Dinner)

We will board the renowned **Alaska Railroad** for an exciting morning as we soak in some of the Last Frontier's most spectacular scenery along the rails from Anchorage to Talkeetna. Founded in 1914, the railroad has a mainline over 656 miles long! Onboard hosts will captivate us with their narration and point out the many landmarks visible through the dome railcar's large picture windows. A delicious breakfast will be enjoyed along the way. Upon our arrival in **Talkeetna**, free time will be available to browse the unique shops and enjoy the tasty lunch options. We'll then embark on an exciting **river journey that will take us deep into the Alaskan wilderness** as our guide shares stories about the wildlife, trappers, and Dena'ina Indians. The beautiful **Talkeetna Alaskan Lodge** (or similar) awaits us back in Talkeetna. After settling into our rooms, the group will gather for a delicious dinner at the lodge.

DAY 3 SATURDAY, AUGUST 10

GIRDWOOD

(Breakfast, Dinner)

Our touring today will take us back south to Anchorage for a visit to the **Alaska Native Heritage Center** to explore Alaska's eleven major Native cultures and their traditions. The center features permanent collections as well as traditional Native dwellings that circle Lake Tiulana. We'll then set off on the **Seward Highway**, a National Scenic Byway widely hailed as one of the most scenic drives in Alaska. The first forty miles of the trip parallel the stunning waterway called the Turnagain Arm. Watch for Dall sheep and beluga whales and enjoy the spectacular scenery as we journey south to the small mountain town of **Girdwood** to settle into our rooms at **Alyeska Resort** (or similar), the chateau-style hotel that is Alaska's premier resort destination. The afternoon is at your leisure. Tonight we will ride the **aerial tram to the top of Mt. Alyeska** to take in the panoramic views of mountains, hanging glaciers, streams, and forests. A lovely dinner will be enjoyed as a group at the hotel.

DAY 4 SUNDAY, AUGUST 11

SEWARD

(Breakfast, Lunch)

After breakfast at the resort this morning, we will make our way to the **Alaska Wildlife Conservation Center** to view wildlife up close. This non-profit sanctuary takes in injured and orphaned animals year-round and maintains over 200 acres of large, spacious habitats for the animals to feel at home and display their natural behavior. We may see brown bears cooling off in the water, a bull moose strutting, wood bison roaming the pastures, and much more! Up next is a river-rafting experience. Our **Kenai River scenic float trip** offers a wonderful introduction to the river, taking us along a scenic stretch in search of the wildlife that frequent the river and riverbanks, including moose, eagles, Dall sheep, salmon, waterfowl, beaver, and bears. Our guide will navigate us through the Chugach National Forest and the Kenai National Wildlife Refuge and share stories about the Native inhabitants, the gold miners, the early settlers, and the forces of nature that shaped the Kenai River Valley. Then we are in for a real treat – a **delicious, Alaska-style, fresh-caught salmon bake!** Our day will come to an end at the **Seward Windsong Lodge** (or similar) with the remainder of the day to explore **Seward** on your own.

DAY 5 MONDAY, AUGUST 12

SEWARD

(Breakfast, Lunch, Dinner)

Following breakfast we will make our way to the **Seavey "Iditaride" Complex**. Over the course of sixty years and four generations, the Seavey family has become known as the preeminent mushing family, winning eight Iditarod races. The family's motto, "take care of your dogs and they will take care of you," has certainly proven to be true. During our time at the kennel, we will visit their homestead; take a **two-mile, wheeled dog sled ride**; get a first-hand introduction to the Iditarod race; and hear stories of the challenges and successes of these mushers. There will be a chance to meet some of the new pups, and you may even get to hold one of them! Next we will board a deluxe marine vessel and **cruise deep into Kenai Fjords National Park**. Our guide will narrate the journey, pointing out the spectacular sights and sharing information on the area's history, its geology, and the wildlife that thrives in the icy waters and lush forests. We'll gaze in awe at towering glaciers and keep our eyes peeled for orca whales, humpback whales, Steller sea lions, harbor seals, puffins, eagles, and many species of seabirds. Lunch is included on board. Later we'll transfer to the pier to **board the beautiful Norwegian Jewel** and explore our home for the next seven nights.



Oceanview stateroom



Balcony stateroom

DAY 6 TUESDAY, AUGUST 13

CRUISE HUBBARD GLACIER

(Breakfast, Lunch, Dinner)

Get up close and personal with the gigantic **Hubbard Glacier**, North America's largest tidewater glacier. It is 1,350 square miles of blue ice and one of the most active glaciers in Alaska! Calving occurs nearly every day, an exciting experience that sends large chunks of ice crashing into the water below.

DAY 7 WEDNESDAY, AUGUST 14

ICY STRAIT POINT

(Breakfast, Lunch, Dinner)

Venture "where the north wind doesn't blow." Known for this famous saying, **Icy Strait Point** is the ideal landing spot for adventurers seeking a new experience. Breathtaking and exciting, Icy Strait Point truly takes you where the wild things are. It's one of the few places in the world where wildlife outnumbers the human population. A trip here certainly satisfies your taste for adventure. While in port, optional excursions include experiencing a traditional Tlingit tribal performance and getting up close to humpback whales and brown bears in the wild. Work up a wilderness hunger and satisfy it with fresh Dungeness crab or take in Alaska's awe-inspiring landscapes by gondola, tram, ATV, kayak, or high-speed boat.

DAY 8 THURSDAY, AUGUST 15

JUNEAU

(Breakfast, Lunch, Dinner)

We are off to **Juneau**, which has been called "Alaska's peak experience," certainly due in part to its unparalleled glacier viewing from such places as Tracy Arm Fjord, the Juneau Icefields, and Glacier Bay National Park. Optional excursions in Juneau include kayaking up one of the area's many protected waterways, embarking on a whale-watching adventure, feasting on salmon, touring historic downtown, or trying one's hand at panning for gold. The majestic Mendenhall Glacier lies nearly twelve miles outside Juneau and can be experienced from both land and sea.

DAY 9 FRIDAY, AUGUST 16

SKAGWAY

(Breakfast, Lunch, Dinner)

In a single year from 1896 to 1897, the remote town of **Skagway** along the Inside Passage grew from a few tents to a city of 20,000 gold seekers. Today, travelers come in search of other riches – to experience yesteryear along Skagway's charming boardwalk lined with buildings that replicate those Gold Rush days. Excursion options include a scenic ride on a vintage train to the summit of White Pass, a dog sledding adventure with the chance to cuddle husky puppies, or panning for gold like the prospectors in the Klondike Gold Rush. The scenery around Skagway is absolutely gorgeous, and there are so many ways to get out and soak it all in! For the more adventurous, hiking, glacier flightseeing, wilderness safaris, rafting, horseback riding, and ziplining are all great options to consider.

DAY 10 SATURDAY, AUGUST 17

KETCHIKAN (WARD COVE)

(Breakfast, Lunch, Dinner)

Its Tlingit Indian name, Kach Khanna, means "spread wings of the eagle." Chances are you'll see one of these magnificent birds perched atop a Sitka tree. Thanks to its abundant rainfall, **Ketchikan** is surrounded by some of the world's most lush wilderness. An introduction to the rich culture of Southeast Alaska's Native Americans and a glimpse at their awe-inspiring totem poles is an experience worth considering. Other optional excursions include flightseeing, crab feasts, a lumberjack show, and salmon or halibut fishing. Plus, there's an opportunity to watch the fishing action aboard the *Aleutian Ballad* from *The Deadliest Catch*!

DAY 11 SUNDAY, AUGUST 18

CRUISE INSIDE PASSAGE

(Breakfast, Lunch, Dinner)

Get ready for amazing views and wildlife like nowhere else as we sail through the islands of **Alaska's Inside Passage**.

DAY 12 MONDAY, AUGUST 19

HOME

(Breakfast)

Following breakfast we will disembark in Vancouver, BC, and transfer to the airport for our flight home.



INCLUSIONS

- Round-Trip Air to Anchorage & Return From Vancouver (air allowance of \$1,000)
 - Airport Baggage Fees for One Bag Per Person
 - Private Motorcoach Transportation on Land Tour & to Pier/Airport
 - 4 Nights' Accommodations on Land
 - 7-Night Cruise in Stateroom Category of Choice
 - 8 Meals on Land & All Meals on Board
 - Taxes & Gratuities for Included Services on Land & Cruise
 - Porter Service of One Bag Per Person at Hotels
 - Professional Tour Manager
 - Balcony & Oceanview Guests Pick One Amenities Package
- PACKAGE 1:
- Premium Beverage Package (Includes drinks up to \$15 each; excludes \$138.60/person gratuities)
 - Ultimate Dining Package (2 nights' dining in specialty restaurants; excludes \$15.80/person gratuities)
 - 250-Minute Internet Package (Per stateroom)
 - \$50 Shore Excursion Credit (Per stateroom, per port)
- PACKAGE 2:
- \$50 Shore Excursion Credit (Per stateroom, per port)
 - 250-Minute Internet Package (Per stateroom)
 - 10-Photo Package (Per stateroom)
 - \$100 Onboard Credit (Per stateroom)
- Inside Guests Pick Two Amenities From One of the Above Packages

Not included in the price of this tour: Local airport transfers, meals other than those listed on the itinerary, beverages other than tea/coffee/water with included meals on land and in ship restaurants only (unless onboard beverage package is chosen), onboard drinks over \$15 each, onboard beverage and dining package gratuities, items of a personal nature/souvenirs, personal services on board such as spa or hair-styling, shore excursions, excursion driver/guide gratuities, phone calls and faxes from hotels/ship, travel protection plan, passport fees, visa fees (if applicable), fees related to any COVID-19 requirements for this destination, and any service not listed in the above inclusions.

Activity Level: Moderate

In order to participate in this tour, **you must:**

- Be able to walk/stand 3-4 hours at a time at an easy pace in all weather conditions
- Be able to regularly maneuver stairs, inclines, and uneven surfaces without assistance

Tour requires a minimum of 20 passengers to operate.

DOCUMENTATION: Each U.S. citizen must have a valid passport through November 19, 2024, to participate. If you don't have a passport, call our office and we'll tell you how to apply for one. Holders of non-U.S. passports have different entry requirements. Please NOTE: Due to airline security measures, your passport name must match your airline ticket name and your tour reservation name or you may be denied aircraft boarding.

OPTIONAL TRAVEL PROTECTION PLAN: Star Destinations recommends that you purchase a Travel Protection Plan to help protect you and your travel investment against the unexpected so you can relax and enjoy your trip. Participants may purchase this coverage from the provider of your choice. For your convenience, we offer a Travel Protection Plan, 360° Group Premier provided by Travelix Insurance Services, that helps provide coverage for trip cancellation/interruption, trip delay, baggage loss, theft or damage, medical expense and emergency evacuation coverage, and more. For more information, please see the product flyer included with this brochure. If you would like to purchase the offered plan, please check the applicable box on the registration form. Please Note: The plan cannot be purchased after final payment. To view/download the Policy, which provides the full coverage terms and details, including limitations and exclusions, go to: <https://policy.travelexinsurance.com/GPZ-1023>. To view state specific fraud warnings, visit: <https://www.travelexinsurance.com/company/fraud-warning>. The purchase of this product is not required in order to purchase any other travel product or service. Your travel retailer might not be licensed to sell travel insurance and will only be able to provide general information about the product. An unlicensed travel retailer may not answer questions about the terms and conditions of the insurance offered and may not evaluate the adequacy of your existing insurance coverage. The products being offered provide insurance coverage that only applies during your covered trip. You may have insurance coverage from other sources that provide similar benefits but may be subject to different restrictions depending upon the coverage. You may wish to compare the terms of the travel policy offered through Travelix with any existing life, health, home, and automobile insurance policies you may have. If you have questions about your coverage under your existing insurance policies, contact your insurer or insurance agent or broker. Travelix Insurance Services, Inc. CA Agency License #0D10209. Travel Insurance is offered on behalf of and under the direction of Travelix Insurance Services. Insurance coverages underwritten by individual member companies of Zurich in North America, including Zurich American Insurance Company (NAIC # 16535).

CANCELLATION: Full refund of all monies is made if cancellation is received in writing to Star Destinations prior to final payment, less the non-refundable 3% credit card transaction fee (if a credit card is used). A 100% fee is charged if the cancellation occurs between final payment and departure. If the reason for cancellation is due to a medical or other reason that is covered by Travel Protection, you may be eligible for reimbursement for such fees from your Travel Protection Plan provider.

TRAVELERS WITH SPECIAL NEEDS: You must advise Star Destinations, Inc. (SDI) at the time of registration of any disability requiring special attention. SDI will make reasonable efforts to accommodate the special needs of travelers. The Americans with Disabilities Act is applicable only in the U.S., and accommodations outside the U.S. may be more limited. Travelers requiring assistance are required to be accompanied by a companion who is capable of, and totally responsible for, providing the assistance. Neither SDI personnel nor its suppliers may lift or physically assist with travelers' special needs including, but not limited to, walking, dining, or other routine activities. Travelers thinking they may need assistance should call SDI to determine what accommodations may reasonably be provided. Arrangements at an additional cost are the financial responsibility of the traveler.

TERMS & CONDITIONS: Star Destinations, Inc. (SDI) acts as an agent for suppliers such as airlines, hotels or activities to provide you with the travel services and accommodations. Although great care is taken in choosing suppliers, we are unable to control them and therefore cannot be held responsible or liable for their acts or omissions. Should a contracted supplier be unable to perform required services, SDI reserves the right to substitute advertised services with similar services. SDI is not responsible for any claims, losses, damages, costs or expenses arising out of injury, accident or death, damage, loss, trip delay or delay of baggage, or other inconvenience resulting from mechanical breakdowns, fire, theft, civil disturbances, government actions, weather, and other factors beyond our control. In the case of a pandemic or worldwide disturbance that interrupts or cancels your planned tour, SDI will do everything possible to retrieve any refundable components of your tour but cannot be held responsible for any non-refundable portions of the tour. In addition, SDI reserves the right to vary the tour price advertised or printed to cover any increase in air fare, volatile fuel prices, government taxes and charges, exchange rate fluctuations, or other tour-related tariffs or newly announced travel costs. In the current travel environment, pricing may be increased due to unexpected requirements for health and safety of tour members. Due to infectious diseases, including COVID-19, destination areas may implement restrictions and requirements that may add additional costs beyond our control. Be aware that any public interaction carries a risk of exposure to infectious diseases. Travelers assume personal risk upon tour registration, and SDI cannot be held responsible in the event of infectious disease exposure. If you request a variation or change to your booking, SDI may choose to accept or reject that request. If accepted, you are responsible for any fees associated with it. If the minimum number of passengers required to operate the tour is not met, SDI reserves the right to cancel the tour.

It is the sole discretion of SDI to refuse transport to any passenger, or require any passenger to leave the tour, if it is reasonably believed that the passenger (1) is dangerous to others or to himself or herself; (2) is engaged in, or is threatening to engage in behavior that may adversely affect the safety, security, enjoyment, or well-being of other passengers, including behavior that is disruptive, verbally or physically abusive, obnoxious, harassing, or obscene; or (3) has failed or refused to follow SDI's rules and procedures or the instructions of its representatives. In the event a passenger is removed, such passenger may be left at any location without any liability to SDI or its representatives. SDI shall not be required to refund any portion of the price paid by any passenger who is removed, nor shall SDI be responsible for any further expenses incurred by the passenger. SDI shall be entitled to recover from the passenger any costs or expenses incurred by SDI or its representatives in the removal of the passenger or the exercise or enforcement of this clause.

TOUR PRICING*

Per Person
Double Occupancy

- (9 available) **Cat. IA** Inside Stateroom (138-278 sq ft)** **\$7,115**
with dining package: \$7,130.80
with beverage package: \$7,253.60
with dining and beverage package: \$7,269.40
- (10 available) **Cat. OA** Oceanview Stateroom (138-161 sq ft)** **\$7,439**
with package 1: \$7,593.40
- (19 available) **Cat. BA** Balcony Stateroom (200-289 sq ft)** **\$7,999**
with package 1: \$8,153.40

*Tour cost subject to 3% credit card transaction fee.
**Staterooms subject to availability at time of registration.
Single pricing available upon request.

OPTIONAL TRAVEL PROTECTION

Star Destinations RECOMMENDS all travelers purchase a Travel Protection Plan. For your convenience, we offer a Travel Protection Plan provided by Travelix Insurance Services.

See the included Travelix Insurance Services flyer for pricing.
(Payment may be sent with your deposit or with final payment to Star Destinations)

Travel Protection Plan may be purchased any time before or with final payment to Star Destinations.

Travel Insurance is underwritten by Zurich American Insurance Company, (NAIC #16535). Any person who knowingly presents a false or fraudulent claim for payment of a loss or benefit or knowingly presents false information in an application for insurance is guilty of a crime and may be subject to fines and confinement in prison. To view state specific fraud warnings, visit: <https://www.travelexinsurance.com/company/fraud-warning>. Travelix Insurance Services Inc. ("Travelix Insurance") maintains an updated list of alerts and financial defaults on its website available at <https://www.travelexinsurance.com/customer-service/travel-alerts/travel-supplier>.

Travelix Insurance Services, Inc. CA Agency License #0D10209. Insurance coverages underwritten by individual member companies of Zurich in North America, including Zurich American Insurance Company (NAIC # 16535).

A \$500 deposit per person is required with your registration form in order to reserve your spot.

FINAL PAYMENT IS DUE:
APRIL 1, 2024

To register online, visit:
www.stardestinations.com/alaska

For further information or questions, please contact:
Star Destinations at (712) 792-9793
or info@stardestinations.com

NORWEGIAN JEWEL®



Refurbished: 2022 • Built: 2005 • Gross Tonnage: 93,502 • Guests (Double Occupancy): 2,376 • Overall Length: 965 feet • Max Beam: 125 feet • Crew: 1,069

SHIP HIGHLIGHTS



The Haven By Norwegian®

The Haven is an exclusive enclave accessible by private keycard with our most luxurious and well-appointed accommodations.



Mandara Spa®

Revive, refresh and recharge in a spa that is remarkable. Start with a hot-stone massage, one of over 50 specialty treatments offered by our well-trained massage therapists.



Bliss Ultra Lounge

Cruise into the clubbing scene at Bliss. Dance to a different beat and feel the excitement as you walk through the lit tunnel to the illuminated bar. It's electric.

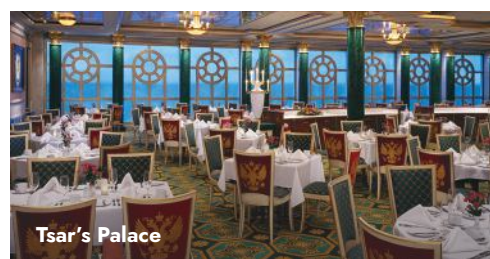
COMPLIMENTARY DINING

Azura

Experience a different culinary adventure with every visit to this Main Dining Room, offering a wide variety of cuisine, a menu that changes daily, Chef's Signature Dishes and carefully selected wine recommendations. Seating capacity 231

Tsar's Palace

Balancing classic favorites with unique new dishes, dining at this Main Dining Room is a must. Offering guests an extensive menu of deliciously fresh flavors. Seating capacity 458



Tsar's Palace

O'Sheehan's Neighborhood Bar & Grill

Casual dining to suit every taste, from salads to burgers to daily dinner specials like prime rib — open 24/7. Seating capacity 196

Garden Café

Whatever you're craving, chances are you'll find it at the Garden Café. This complimentary, indoor buffet-style restaurant serves up breakfast, lunch and dinner — and the floor-to-ceiling windows provide picturesque ocean views. Seating capacity 406

The Great Outdoors

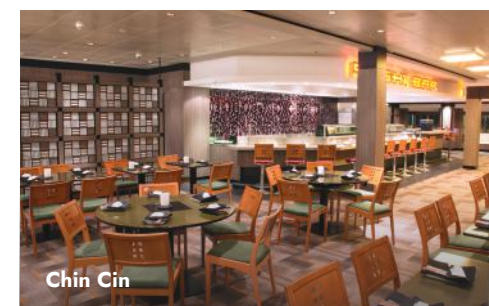
This spacious outdoor buffet offers outstanding ocean views and has all your favorites, from burgers and fries to chicken, all made to order. Seating capacity 206

Topsiders Bar & Grill

Enjoy your favorites at Topsiders where made-to-order favorites are grilled just the way you like. Seating capacity 216

Chin Chin

Enjoy an Asian fusion menu featuring freshly prepared noodles, delicious wok-fried dishes, authentic soups and more. Seating capacity 80



Chin Chin

SPECIALTY DINING & TREATS

Cagney's Steakhouse

An authentic American steakhouse where choice cuts of Angus Beef® are perfectly prepared. Seating capacity 106

La Cucina

Buona sera! Enjoy the freshest ingredients and dine on classics from Italy like osso buco or seafood fettuccine. Seating capacity 92

Teppanyaki

Sit at a lively shared table as a skillful chef perfectly prepares Japanese hibachi shrimp, steak, chicken and fried rice on a large steel grill. Seating capacity 32

Moderno Churrascaria

A Brazilian steakhouse boasting an impressive salad bar, cured meats and cheeses. Be sure to save room for skewers of slow-roasted meats carved tableside by our pasadores. Seating capacity 106

Le Bistro

French cuisine at its finest. Surround yourself in classic décor and plates of rich cuisine such as escargot, bouillabaisse and coq au vin. Seating capacity 106

Sushi

If you're in the mood for sushi, pull up a stool at this contemporary sushi, sashimi and yakitori bar for traditional Japanese bites. Seating capacity 10

Atrium Café & Bar with The Bake Shop Treats

A morning and late-night favorite place to relax, enjoy your coffee with a treat from The Bake Shop, grab a beer, sip a glass of wine or your favorite drink amid the hustle and bustle of the Atrium.

ENTERTAINMENT / BARS & LOUNGES

Rock You Tonight

Take a walk on the wild side in tonight's production of Rock You Tonight! The high-energy grooves of our Jewel Production Cast combines with the rocking sounds of the Norwegian Jewel Showband to bring you an athletic explosion of dance that leaps off the stage to rock icons Queen, Journey, and The Who.

Velvet

Ready to "Turn the Beat Around"? Then slip behind the red velvet rope to relive the music and glamour of the sexy disco era. Showcasing a stellar array of circus acrobatics, Velvet will have you off your seat with excitement singing along with fabulous disco divas, and boogying to groovy hits like "Enough is Enough" and "Last Dance."

Deal or No Deal

Just like the popular television game show, *Deal or No Deal*, contestants along with the audience try to beat the banker for exciting prizes.

Stardust Theater

You're invited for an evening of laughter and entertainment in the Stardust Theater. Seating capacity 996
Seating capacities subject to change.



Stardust Theater

Atrium Cafe & Bar

You'll love the people-watching at this great casual hangout located in the beautiful Atrium. Seating capacity 59

O'Sheehan's Neighborhood Bar & Grill

Try a few of the many beers on tap, catch a game on the two-story TV screen or play some billiards or darts. Seating capacity 196.



O'Sheehan's Neighborhood Bar & Grill

Bliss Ultra Lounge

Cruise into the clubbing scene at Bliss. Dance to a different beat and feel the excitement as you walk through the lit tunnel to the illuminated bar. It's electric. Seating capacity 85

Magnum's Champagne & Wine Bar

Sip your favorite champagne and wine in this upscale lounge. Seating capacity 68

Sugarcane Mojito Bar

Savor a delicious handcrafted mojito freshly muddled just the way you like. Seating capacity 16

Shaker's Martini & Cocktail Bar

Happy hour comes shaken or stirred at this classic martini bar with a twist. Join the martini crowd for a cosmopolitan ambience. Seating capacity 45

Topsiders Bar & Grill

A full-service bar located at the Oasis Pool, perfect for working on your tan while sipping your favorite drink. Seating capacity 216

Malting's Beer & Whiskey Bar

With a unique variety of international spirits and an impressive list of imported and domestic beers, you can sip your way around the world. Seating capacity 42

The Great Outdoors Bar

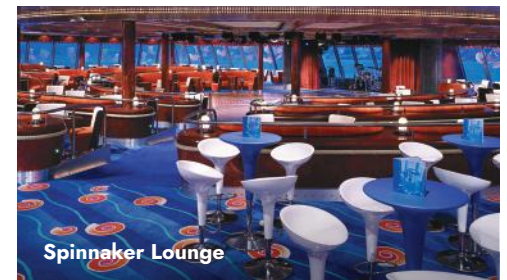
Sip on a refreshing beer at this bustling open-air buffet.



The Great Outdoors Bar

Spinnaker Lounge

Meet up with friends for cocktails or step onto the dance floor at this popular bar and lounge. Seating capacity 291



Spinnaker Lounge

Sake Bar

Enjoy this full-service bar offering premium sake and imported beer.

ACTIVITIES FOR KIDS

Splash Academy

Kids will have a blast at our complimentary youth program, where they can enjoy creative play, themed activities, sports and more. Supervised Group Sitting* is available on port days or in the evening.

**Nominal fee applies.*

Video Arcade

Stop by and capture a few aliens, win a car race, play pinball and fly a jet fighter. Let your imagination run wild at the Video Arcade.

Kids' Pool

They'll splash. They'll splash. Kids will have the best of times at the Kids' Pool.

ALASKA LAND & CRUISE



To register online, visit:
www.stardestinations.com/alaska

For further information or questions,
 please contact:
Star Destinations
(712) 792-9793
info@stardestinations.com

August 8-19, 2024

Tour requires a minimum of 20 passengers to operate.

PASSENGER INFORMATION (1st Traveler)
 Full name must be exactly as it appears on your passport or passport application.
 Passport information may be sent later if you have yet to obtain a passport.

First Name: _____

Middle Name(s): _____

Last Name(s): _____

Preferred Name: _____ Gender (circle one): M F

Address: _____

City: _____ State: _____ Zip: _____

Preferred Phone: _____

Email: _____

Passport #: _____

Passport Expiration Date: _____ / _____ / _____
month / day / year

Date of Birth: _____ / _____ / _____
month / day / year

Dietary Needs: _____

Additional Special Requests/Needs: _____

Emergency Contact: _____

Relationship: _____

Emergency Contact's Phone: _____

PASSENGER INFORMATION (2nd Traveler)
 Full name must be exactly as it appears on your passport or passport application.
 Passport information may be sent later if you have yet to obtain a passport.

First Name: _____

Middle Name(s): _____

Last Name(s): _____

Preferred Name: _____ Gender (circle one): M F

Address: _____

City: _____ State: _____ Zip: _____

Preferred Phone: _____

Email: _____

Passport #: _____

Passport Expiration Date: _____ / _____ / _____
month / day / year

Date of Birth: _____ / _____ / _____
month / day / year

Dietary Needs: _____

Additional Special Requests/Needs: _____

Emergency Contact: _____

Relationship: _____

Emergency Contact's Phone: _____

Star Destinations RECOMMENDS all travelers purchase a Travel Protection Plan. For your convenience, we offer a Travel Protection Plan provided by Traveler Insurance Services.

Yes, I would like to purchase the offered plan.
 See the included Traveler Insurance Services flyer for pricing.
 (Payment may be sent with your deposit or with final payment to Star Destinations)

No, I decline the offered plan.

Travel Insurance is underwritten by Zurich American Insurance Company, (NAIC #16535). Any person who knowingly presents a false or fraudulent claim for payment of a loss or benefit or knowingly presents false information in an application for insurance is guilty of a crime and may be subject to fines and confinement in prison. To view state specific fraud warnings, visit: <https://www.travelerinsurance.com/company/fraud-warning>. Traveler Insurance Services Inc. ("Traveler Insurance") maintains an updated list of alerts and financial defaults on its website available at <https://www.travelerinsurance.com/customer-service/travel-alerts/travel-supplier>.

Traveler Insurance Services, Inc. CA Agency License #OD10209. Insurance coverages underwritten by individual member companies of Zurich in North America, including Zurich American Insurance Company (NAIC # 16535).

Please choose a stateroom: (Double Occupancy)
Trip Costs Per Person*

Cat. IA Inside Stateroom (138-278 sq ft - 9 available)** **\$7,115**
 with dining package: \$7,130.80
 with beverage package: \$7,253.60
 with dining and beverage package: \$7,269.40

Cat. OA Oceanview Stateroom (138-161 sq ft - 10 available)** **\$7,439**
 with package 1: \$7,593.40

Cat. BA Balcony Stateroom (200-289 sq ft - 19 available)** **\$7,999**
 with package 1: \$8,153.40

(Cost includes air allowance of \$1,000)

*Tour cost subject to 3% credit card transaction fee.
 **Staterooms subject to availability at time of registration.
 Single pricing available upon request.

* A Travel Protection Plan may be purchased any time before or with final payment to Star Destinations *

PLEASE TURN OVER FOR SIGNATURE

ALASKA LAND & CRUISE

DOCUMENTATION: Each U.S. citizen must have a valid passport through November 19, 2024, to participate. If you don't have a passport, call our office and we'll tell you how to apply for one. Holders of non-U.S. passports have different entry requirements. Please NOTE: Due to airline security measures, your passport name must match your airline ticket name and your tour reservation name or you may be denied aircraft boarding.

OPTIONAL TRAVEL PROTECTION PLAN: Star Destinations recommends that you purchase a Travel Protection Plan to help protect you and your travel investment against the unexpected so you can relax and enjoy your trip. Participants may purchase this coverage from the provider of your choice. For your convenience, we offer a Travel Protection Plan, 360° Group Premier provided by Travel Insurance Services, that helps provide coverage for trip cancellation/interruption, trip delay, baggage loss, theft or damage, medical expense and emergency evacuation coverage, and more. For more information, please see the product flyer included with this brochure. If you would like to purchase the offered plan, please check the applicable box on the registration form. Please Note: The plan cannot be purchased after final payment. To view/download the Policy, which provides the full coverage terms and details, including limitations and exclusions, go to: <https://policy.travelinsurance.com/GPZ-1023>. To view state specific fraud warnings, visit: <https://www.travelinsurance.com/company/fraud-warning>. The purchase of this product is not required in order to purchase any other travel product or service. Your travel retailer might not be licensed to sell travel insurance and will only be able to provide general information about the product. An unlicensed travel retailer may not answer questions about the terms and conditions of the insurance offered and may not evaluate the adequacy of your existing insurance coverage. The products being offered provide insurance coverage that only applies during your covered trip. You may have insurance coverage from other sources that provide similar benefits but may be subject to different restrictions depending upon the coverage. You may wish to compare the terms of the travel policy offered through Travel Insurance Services with any existing life, health, home, and automobile insurance policies you may have. If you have questions about your coverage under your existing insurance policies, contact your insurer or insurance agent or broker. Travel Insurance Services, Inc. CA Agency License #0D10209. Travel Insurance is offered on behalf of and under the direction of Travel Insurance Services. Insurance coverages underwritten by individual member companies of Zurich in North America, including Zurich American Insurance Company (NAIC# 16535).

CANCELLATION: Full refund of all monies is made if cancellation is received in writing to Star Destinations prior to final payment, less the non-refundable 3% credit card transaction fee (if a credit card is used). A 100% fee is charged if the cancellation occurs between final payment and departure. If the reason for cancellation is due to a medical or other reason that is covered by Travel Protection, you may be eligible for reimbursement for such fees from your Travel Protection Plan provider.

TRAVELERS WITH SPECIAL NEEDS: You must advise Star Destinations, Inc. (SDI) at the time of registration of any disability requiring special attention. SDI will make reasonable efforts to accommodate the special needs of travelers. The Americans with Disabilities Act is applicable only in the U.S., and accommodations outside the U.S. may be more limited. Travelers requiring assistance are required to be accompanied by a companion who is capable of, and totally responsible for, providing the assistance. Neither SDI personnel nor its suppliers may lift or physically assist with travelers' special needs including, but not limited to, walking, dining, or other routine activities. Travelers thinking they may need assistance should call SDI to determine what accommodations may reasonably be provided. Arrangements at an additional cost are the financial responsibility of the traveler.

TERMS & CONDITIONS: Star Destinations, Inc. (SDI) acts as an agent for suppliers such as airlines, hotels or activities to provide you with the travel services and accommodations. Although great care is taken in choosing suppliers, we are unable to control them and therefore cannot be held responsible or liable for their acts or omissions. Should a contracted supplier be unable to perform required services, SDI reserves the right to substitute advertised services with similar services. SDI is not responsible for any claims, losses, damages, costs or expenses arising out of injury, accident or death, damage, loss, trip delay or delay of baggage, or other inconvenience resulting from mechanical breakdowns, fire, theft, civil disturbances, government actions, weather, and other factors beyond our control. In the case of a pandemic or worldwide disturbance that interrupts or cancels your planned tour, SDI will do everything possible to retrieve any refundable components of your tour but cannot be held responsible for any non-refundable portions of the tour. In addition, SDI reserves the right to vary the tour price advertised or printed to cover any increase in air fare, volatile fuel prices, government taxes and charges, exchange rate fluctuations, or other tour-related tariffs or newly announced travel costs. In the current travel environment, pricing may be increased due to unexpected requirements for health and safety of tour members. Due to infectious diseases, including COVID-19, destination areas may implement restrictions and requirements that may add additional costs beyond our control. Be aware that any public interaction carries a risk of exposure to infectious diseases. Travelers assume personal risk upon tour registration, and SDI cannot be held responsible in the event of infectious disease exposure. If you request a variation or change to your booking, SDI may choose to accept or reject that request. If accepted, you are responsible for any fees associated with it. If the minimum number of passengers required to operate the tour is not met, SDI reserves the right to cancel the tour.

It is the sole discretion of SDI to refuse transport to any passenger, or require any passenger to leave the tour, if it is reasonably believed that the passenger (1) is dangerous to others or to himself or herself; (2) is engaged in, or is threatening to engage in behavior that may adversely affect the safety, security, enjoyment, or well-being of other passengers, including behavior that is disruptive, verbally or physically abusive, obnoxious, harassing, or obscene; or (3) has failed or refused to follow SDI's rules and procedures or the instructions of its representatives. In the event a passenger is removed, such passenger may be left at any location without any liability to SDI or its representatives. SDI shall not be required to refund any portion of the price paid by any passenger who is removed, nor shall SDI be responsible for any further expenses incurred by the passenger. SDI shall be entitled to recover from the passenger any costs or expenses incurred by SDI or its representatives in the removal of the passenger or the exercise or enforcement of this clause.

Sleeping Preference (circle one): Two Beds One Bed

Roommate (name): _____

A \$500 deposit per person is required with your registration form in order to reserve your spot.

FINAL PAYMENT IS DUE: APRIL 1, 2024

A copy of your passport is required with registration or as soon as possible.

DEPOSIT PAYMENT INFORMATION:

Enclosed is my check, made payable to: Star Destinations

In the amount of: _____

Mail Check to: Star Destinations
PO Box 456, Carroll, IA 51401

CREDIT CARD PAYMENTS (tour cost subject to 3% credit card transaction fee):
(Please Note: The charge will appear on your statement as Star Destinations)

Visa Mastercard In the amount of: _____

Credit Card Number: _____

Exp. Date: _____ / _____ Security Code: _____
 month / year

Name as it appears on card: _____

Balcony & Oceanview Guests: Select all four options in ONE package. **Inside Guests:** Select two options in ONE package.

Package 1:

- | | |
|--|---|
| <input type="checkbox"/> Premium Beverage Package
(Excludes \$138.60/person gratuities) | <input type="checkbox"/> 250-Minute Internet Package
(Per stateroom) |
| <input type="checkbox"/> Ultimate Dining Package
(2 nights' dining in specialty restaurants;
excludes \$15.80/person gratuities) | <input type="checkbox"/> \$50 Shore Excursion Credit
(Per stateroom, per port) |

Package 2:

- | | |
|---|--|
| <input type="checkbox"/> \$50 Shore Excursion Credit
(Per stateroom, per port) | <input type="checkbox"/> 10-Photo Package
(Per stateroom) |
| <input type="checkbox"/> 250-Minute Internet Package
(Per stateroom) | <input type="checkbox"/> \$100 Onboard Credit
(Per stateroom) |

By registering for this tour and signing below, **you acknowledge that Star Destinations reserves the right to refuse transport at any time to any passenger who does not meet the activity level requirements.** Star Destinations will not be required to refund any portion of the price paid by any passenger who is removed in enforcement of this clause.

Signature (1st Traveler): _____

Date: _____

Please initial to indicate you have read/agree to the terms and conditions: _____

Have you cruised with NCL in the past? YES NO

If yes, please include your Latitudes Rewards number (if known): _____

Activity Level: Moderate

In order to participate in this tour, **you must:**

- Be able to walk/stand 3-4 hours at a time at an easy pace in all weather conditions
- Be able to regularly maneuver stairs, inclines, and uneven surfaces without assistance

Signature (2nd Traveler): _____

Date: _____

Please initial to indicate you have read/agree to the terms and conditions: _____

Have you cruised with NCL in the past? YES NO

If yes, please include your Latitudes Rewards number (if known): _____



Group tours are an exciting way to explore the world, and a Travelex travel protection plan can help ensure that you stay safe during your next tour. Our 360° Group Premier plan provides maximum travel protection for all ages at competitive group rates. Benefits include trip cancellation and interruption, emergency medical coverage, and 24/7 travel assistance services.



360° Group Premier | Group Travel Protection

Plan highlights

- Trip cancellation/interruption benefit includes:
 - Sickness, injury, or death¹
 - Inclement weather & natural disasters
 - Financial insolvency² & labor strike
 - Involuntary unemployment
- Primary coverage, no deductibles³
- Medical evacuation
- 5-hour travel delay benefit
- 3-hour missed connection benefit
- 12-hour baggage delay benefit
- Fast online claims⁴

360° Group Premier plan rates by trip cost and age³

Trip cost	0-59	60-74	75+
\$0	\$36	\$47	\$64
\$1 - \$250	\$44	\$58	\$81
\$251 - \$500	\$57	\$74	\$105
\$501 - \$1,000	\$86	\$114	\$168
\$1,001 - \$1,500	\$109	\$143	\$211
\$1,501 - \$2,000	\$149	\$191	\$215
\$2,001 - \$2,500	\$191	\$245	\$277
\$2,501 - \$3,000	\$234	\$300	\$338
\$3,001 - \$3,500	\$276	\$354	\$400
\$3,501 - \$4,000	\$319	\$409	\$461
\$4,001 - \$4,500	\$361	\$463	\$523
\$4,501 - \$5,000	\$404	\$518	\$584
\$5,001 - \$5,500	\$446	\$572	\$646
\$5,501 - \$6,000	\$489	\$627	\$707
\$6,001 - \$6,500	\$531	\$681	\$769
\$6,501 - \$7,000	\$574	\$736	\$830
\$7,001 - \$8,000	\$638	\$818	\$923
\$8,001 - \$9,000	\$723	\$927	\$1,046
\$9,001 - \$10,000	\$808	\$1,036	\$1,169
\$10,001 - \$11,000	\$893	\$1,145	\$1,292
\$11,001 - \$12,000	\$978	\$1,254	\$1,415
\$12,001 - \$13,000	\$1,063	\$1,363	\$1,538
\$13,001 - \$14,000	\$1,148	\$1,472	\$1,661
\$14,001 - \$15,000	\$1,233	\$1,581	\$1,784
\$15,001 - \$16,000	\$1,318	\$1,690	\$1,907
\$16,001 - \$17,000	\$1,403	\$1,799	\$2,030
\$17,001 - \$18,000	\$1,488	\$1,908	\$2,153
\$18,001 - \$19,000	\$1,573	\$2,017	\$2,276
\$19,001 - \$20,000	\$1,658	\$2,126	\$2,399

360° Group Premier plan benefits³

Benefits	Coverage
Trip cancellation	100% of trip cost (up to \$20,000)
Trip interruption	150% of trip cost (up to \$30,000)
Trip interruption—return air only ⁵	\$1,000
Travel delay	\$1,000 (\$250/day)
Missed connection	\$1,000
Baggage & personal effects	\$1,500
Sporting equipment delay ³	\$600
Baggage delay	\$250
Emergency medical expenses ⁶	\$50,000
Emergency dental expenses ⁶	\$500
Emergency evacuation & repatriation	\$250,000
Accidental death & dismemberment	\$10,000
Travel assistance services ⁷	Included

¹Of you, a traveling companion, family member, or business partner. ²Coverage when plan is purchased at or before the final trip payment. ³All coverage per insured up to the limits listed. Pre-existing medical conditions waiver may vary by state. Coverages may vary and may not be available in all states. Please see the policy for details, or call +1.888.574.7026. Rates are subject to change. ⁴Based on industry average. Fastest payment on approved claims is based on electronic payment of claim. ⁵Coverage for trip interruption and trip interruption—return air only cannot be combined. ⁶\$50 deductible in CT, IN, KS, MO, MT, VT, and WA. ⁷Provided by the designated provider listed in the policy. 10.23 GRPFLY3





Questions about plan benefits?

Call +1.888.574.7026 or email
360Group@travelexinsurance.com,
and reference Plan GPZ-1023.

Trip cancellation & trip interruption

Protect travel investments and recover nonrefundable prepaid costs if your trip is canceled or interrupted for a covered reason. Popular covered reasons include:

- Sickness, injury, or death¹
- Residence or destination uninhabitable
- Strike
- Inclement weather
- Cancel for business reasons
- Traffic accident en route
- Quarantine
- Jury duty/subpoena
- Military duty
- Financial insolvency²
- Terrorist incident
- Theft of passport/visa
- Involuntary termination

Travel delay

Reimbursement for reasonable additional costs — such as accommodations, local transportation, and meals — if travel is delayed five hours or longer.

Baggage & personal effects

Reimbursement for personal articles and expenses if bags are lost, stolen, or damaged.

Baggage delay

Reimbursement for reasonable additional personal articles and expenses if bags are delayed for 12 hours or more.

Emergency medical & dental expenses⁶

Emergency medical treatment if sickness or injury occurs while traveling.

Emergency medical evacuation

Includes emergency medical evacuation to the nearest suitable medical facility, help returning home if medically necessary, and repatriation expenses.

Accidental death & dismemberment

Reimbursement for permanent loss of life, limbs, or sight from a covered accidental injury during travel.

Pre-existing medical condition exclusion waiver³

Pre-existing medical conditions are eligible for coverage when:

- The traveler is medically able to travel at the time of plan purchase
- The plan is purchased at or before the final trip payment

A pre-existing medical condition is an injury, sickness, or other condition (excluding any condition from which death ensues) of an insured, traveling companion, or family member traveling with the insured within the 60-day period immediately preceding the insured's plan purchase date.

Plan details

View policy at policy.travelexinsurance.com/GPZ-1023

Unless otherwise stated in the plan, this plan will not pay for any loss arising directly or indirectly out of, or as a result of, or from, or that occur to, or are as a result of the actions of the insured or the insured's family member, or traveling companion, or business partner for the following: suicide, attempted suicide, or intentionally self-inflicted injury, while sane or insane (while sane in CO and MO); mental, nervous, or psychological disorders; being under the influence of drugs or intoxicants, unless prescribed by a physician; normal pregnancy, resulting childbirth, and elective abortion; participation as a professional in athletics while on a covered trip; participation in organized amateur or interscholastic athletic or sports competition or related practice events; riding or driving in any motor competition; off-road driving, whether as a driver or as a passenger; declared or undeclared war, or any act of war; civil disorder; service in the armed forces of any country; nuclear reaction or radioactive contamination; operating or learning to operate any aircraft as pilot or crew; mountain climbing, bungee jumping, snow skiing, skydiving, parachuting, free falling, cliff diving, B.A.S.E. or base jumping, hang gliding, parasailing, extreme sports, or travel on any air-supported device other than on a regularly scheduled airline or air charter company; mountaineering where ropes or guides are commonly used, including ascending and descending a mountain requiring specialized equipment, including but not limited to anchors, bolts, carabiners, crampons, lead/top-rope anchoring equipment, and pick-axes; scuba diving, if the depth of the water exceeds 75 feet; the insured's commission of or attempt to commit a felony; elective medical or holistic treatment or procedures; failure of any tour operator, common carrier, other travel supplier, person, or agency to provide the bargained-for travel arrangements/services; a loss that results from a sickness, disease, or other condition, event, or circumstance that occurs at a time when this policy is not in effect for the insured; a diagnosed sickness (if insurance is purchased after such diagnosis) from which no recovery is expected and that only palliative treatment is provided and that carries a prognosis of death within 12 months of the effective date of the applicable coverage under this policy; sickness, injury, or death if the plan is purchased after entering a hospice facility or receiving hospice treatment; any trip taken outside the advice of a physician; or a pre-existing condition, including death, that results therefrom (within the stated look-back period within your insurance policy). Additionally, this plan will not pay for any loss arising directly or indirectly out of, or as a result of, or from, or that occur to, or are as a result of the actions of the following that occur to the insured: any amount paid or payable under any worker's compensation, disability benefit, or similar law; a loss or damage caused by detention, confiscation, or destruction by customs; or medical treatment during a covered trip or arising from a covered trip undertaken for the purpose or intent of securing medical treatment. The following additional exclusion applies to accidental death and dismemberment benefits: We will not pay for loss caused by or resulting from sickness of any kind. Please refer to your plan documents for a complete list of plan exclusions and limitations, as well as the definitions of capitalized terms used herein. The purchase of this product is not required in order to purchase any other travel product or service. Your travel retailer might not be licensed to sell travel insurance and will only be able to provide general information about the product. An unlicensed travel retailer may not answer questions about the terms and conditions of the insurance offered and may not evaluate the adequacy of your existing insurance coverage. The products offered provide insurance coverage that only applies during your covered trip. You may have insurance coverage from other sources that provides similar benefits but may be subject to different restrictions, depending on the coverage. You may wish to compare the terms of the travel policy offered through Travelex with any existing life, health, home, and automobile insurance policies you may have. If you have questions about your coverage under your existing insurance policies, contact your insurer or insurance agent or broker. Any inquiry regarding claims may be directed to Zurich Travel Assist at claims@zurichtravellassist.com, P.O. Box 968019, Schaumburg, IL 60196-8019; +1.800.501.4781. Inquiries regarding new, existing, or denied claims, as well as any other claims questions, may also be directed to this address. Consumers in California may also contact the California Department of Insurance Hotline at +1.800.927.4357 or +1.213.897.8921. Travelex Insurance Services, Inc. CA Agency License #0D10209. Consumers in Maryland may contact the Maryland Insurance Administration at +1.800.492.6116 or +1.410.468.2340. Insurance coverages underwritten by Zurich American Insurance Company, a New York-domiciled company with its principal place of business at 1299 Zurich Way, Schaumburg, IL 60196 (NAIC # 16535). The terms and conditions of the policy described in this brief summary are governed by the individual policy document that contains the complete terms. In the event of any discrepancy between the information in this brief summary and the policy, the policy document shall govern. This is intended as a general description of certain types of insurance available to qualified customers and provided solely for informational purposes. Policy Form Series #U-TIIV-100-A CW, #U-TIIN-100/110-A CW, #U-TIGV-100-A CW, #U-TIGV-100-A CW; in DC #U-TIIV-100-A DC & #U-TIGV-100-A DC; in IN #U-TIIN-100/110-A IN & U-TIGV-100-A IN; in KS U-TIIN-110-A KS; in MN #U-TIIV-100-B MN & #U-TIGV-100-B MN; in MO U-TIIN-110-A MO; in MT #U-TIIN-100/110 MT & U-TIGV-100-A CW; in NH #U-TIIV-100-A NH; #U-TIIV-101-B NY, #U-TIIN-100 NY; in OR #U-TIIV-100-A OR; in VA #U-TIIV-100-A VA and #U-TIGV-100-A VA; in VT #U-TIIN-100/110-A VT. 10.23 GRPFLY3



Dream. Explore. Travel On.